

TYPE A
3 BED 1 STOREY
UNITS 1, 4

TYPE B
3 BED 1 STOREY
UNITS 2, 3, 6, 7

TYPE C
3 BED 1 STOREY
UNITS 5, 8

TYPE D
3 BED + DEN 3 STOREY
UNITS 9, 16

TYPE E
3 BED + DEN 3 STOREY
UNITS 10, 11, 12, 13, 14, 15

ONE-STOREY, THREE BEDROOM CONDO

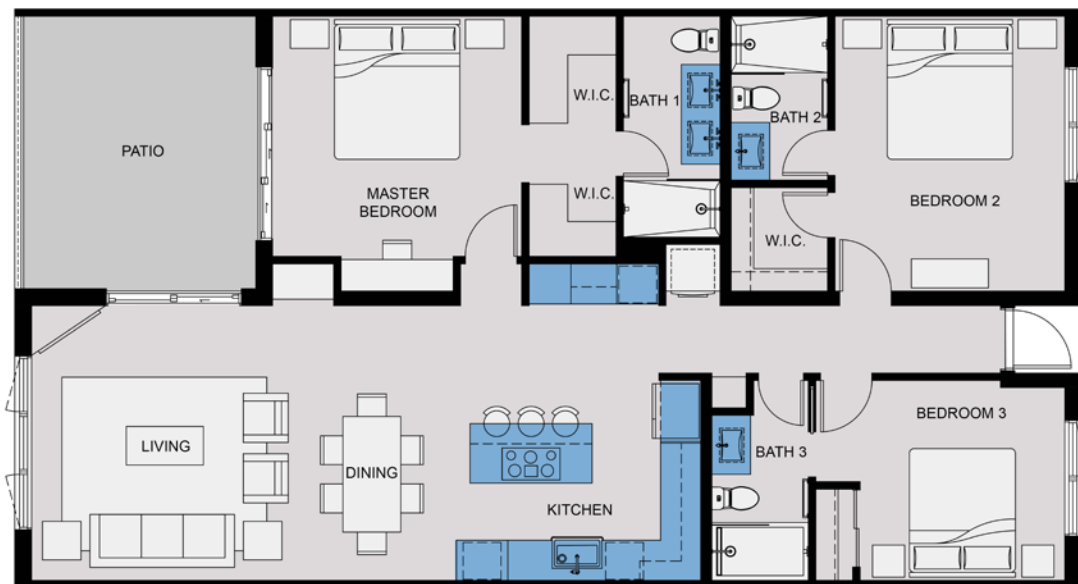


FIRST FLOOR

UNIT TYPE A

TOTAL AREA: 1,675 SQ.FT.

ONE-STOREY, THREE BEDROOM CONDO



FIRST AND SECOND FLOOR

UNIT TYPE B

TOTAL AREA: 1,647 SQ.FT.

ONE-STOREY, THREE BEDROOM CONDO

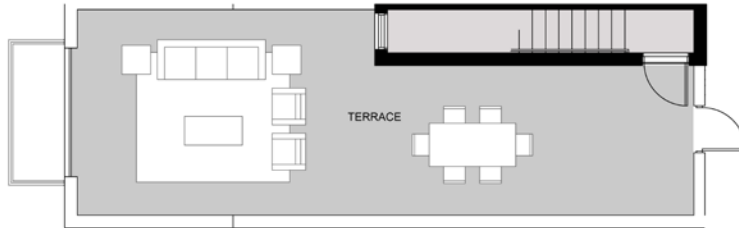


SECOND FLOOR

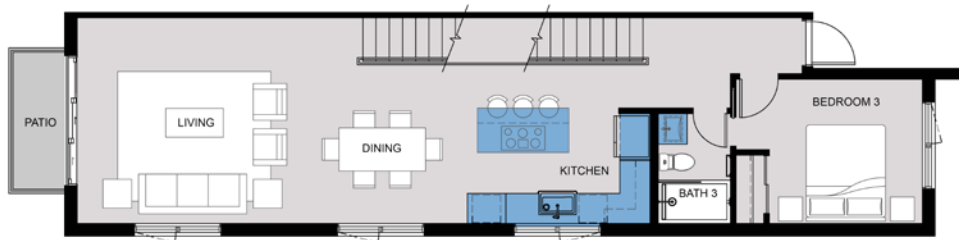
UNIT TYPE C

TOTAL AREA: 1,733 SQ.FT.

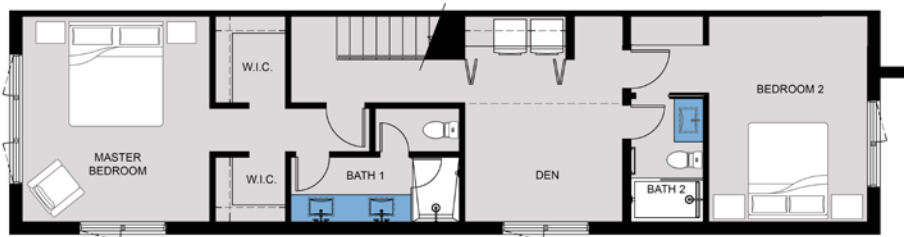
THREE-STOREY, THREE BEDROOM + DEN TOWNHOME



ROOF TERRACE



FOURTH FLOOR



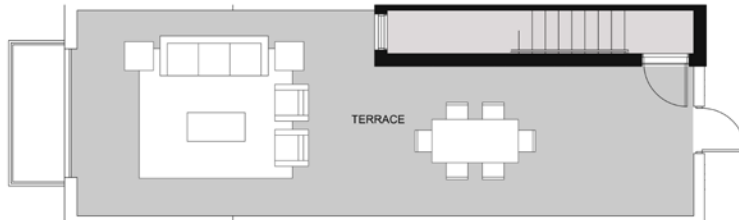
THIRD FLOOR

UNIT TYPE D

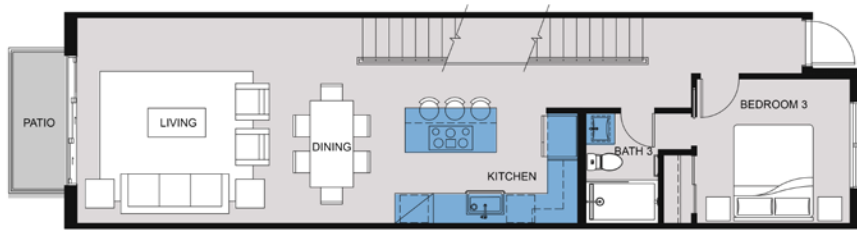
TOTAL AREA: 1,864 SQ.FT.

ROOF TERRACE AREA: 590 SQ. FT.

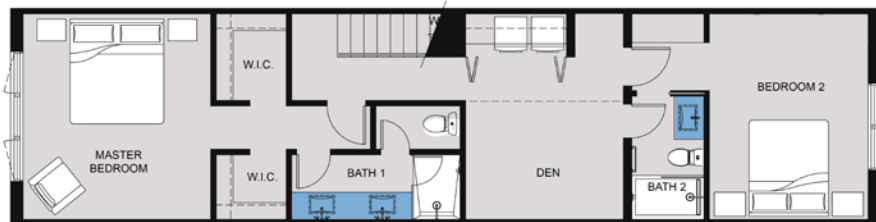
THREE-STOREY, THREE BEDROOM + DEN TOWNHOME



ROOF TERRACE



FOURTH FLOOR



THIRD FLOOR

UNIT TYPE E

TOTAL AREA: 1,749 SQ.FT.

ROOF TERRACE AREA: 568 SQ. FT.

CONTACT

For more information, please contact:

TANIA KNAPIK
SALES & MARKETING MANAGER
NCB GROUP

info@wavescayman.ky
345.325.6868

wavescayman.ky

WAVES

